



TFFC

NEWSLETTER

FROM THE CHAIR

TFFC – September 2007 Newsletter

Hi All,

It is with deep regret that I have to inform you all of the death of two of our members – Morris Drake and Alwyn Hewson.

Morris passed away on the 3rd August, just one month short of his 91st birthday. Morris will be sadly missed by all who knew him. Our condolences go to Maryn and children in this time of great sorrow.

Alwyn Hewson was tragically killed in a motor accident on the 17th August at the tender age of 45. Alwyn will be sadly missed as a husband, father and friend. Our condolences go to Daryl, children and family in their hour of need.

A fire, which had a devastating effect on the area, burning from our farm to the main road between Belfast and Dullstroom, started on the wall of dam 7 on the afternoon of the 14th August. We are not sure how it started, but the consensus view of those who were there for the weekend, is that it was caused

from a spark from the shareholders' chimney. A big thank you to Vic Dean, Johan van Huyssteen, Beyers Roux, Selwyn Rogoff, Charl van Deventer and two guests – Richard Venn and Gustav Holtzhausen, for giving up their afternoon fishing to fight the fire. The area is very dry at the moment -please ensure that if you light a fire for any reason whatsoever, including braaing, that you never leave it unattended and ensure that it is doused when you are finished

Even taking the current low levels of the dams into account, the farm is

Editorial

I am constantly amazed at the effort the committee puts into the Farm and the Club. I am sure that when you go to the farm you appreciate the accommodation, the comfort of the beds, the quality of the fishing, the fact that the stoves, fridges and other appliances work and the pristine condition of the farm itself.

This does not happen by chance or luck but by the resolute and stubborn actions of your committee members.

This, in stark contrast to the apathy you members have displayed.

Before you cry "foul" please observe your reply to the function arranged by Michelle. To say that your response was enthusiastically appalling would be to compliment you.

I hope your apathy is not contagious.



producing some incredible fishing. This is borne out by the fact that even Sheila Brittain has recorded catching 4 or 5 good fish over a weekend (and it was not even a long weekend) on more than one occasion. The fishing records also bear out the quality of the fishing as we achieved the highest average length (42cm) with an average condition factor of 126, the second highest since 1996. As the rainy season approaches, let's hope that the rain god (Modjadji in that part of our country) smiles upon the farm and that we have a good rainy season.



Michelle Ziemons – our newly appointed events manager, put together a great family get together at Brookwood Estates on Sunday 22nd July. Unfortunately, due to a very disappointing response from you our members, it had to be cancelled. My thanks go to Michelle for the time and effort she put in to organising this event.

There have been a couple of incidents in recent months of members claiming ignorance when being challenged regarding contravention of the rules of the farm. To avoid any further such occurrences, a copy of the rules has been included in this news letter.

In conclusion, with any luck, the dams will fill up and spring will bring great fishing.
Tight lines.

Cheers

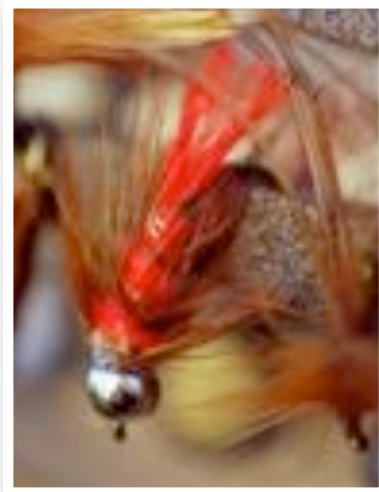
Kevin

Piscatorially Speaking

Fishing & Dams

As you are aware last summer at Middelpunt was hot and very dry. In addition we had to drop No.5 to remove surplus grass carp and with no water flowing through the system from No.1 downstream both 5 and 6 are now very low. We have therefore decided to keep No.2 topped up from No.1 so there is at least one dam in good shape on that side of the farm. It also means that Charl van Deventer's team can remove some

of the grass carp from No.1 by end October as this dam has been discoloured for some time.



Fortunately 3, 4 and 7, which are in the main catchment, are looking much better. No.3 has dropped a bit but the other two are full and in June we hired a weeding party to clear No.4 and parts of No.3, especially off the jetties and wall. The result is that with No.2 we have four dams, which are very fishable until such time as the summer rains arrive.

With regard to stocking we are trying something new. In the past we have tried to purchase trout averaging about 700g so what was mostly caught tended to be



BOOKING OF THE FARM

Please be advised that the farm booking hours are between 8 AM and 5 PM Monday to Friday and not at any other times.

in the 38 – 40 cm range. At the moment we asking for more variety in the deliveries so what is being stocked can be in the range of 350 g to as large as 1,5 kg. The smallest are very good in the pan while the large fish are surprisingly strong.

PLEASE FILL IN THE RETURNS BOOK. EVEN IF YOU DON'T CATCH!

AGM

The Annual General Meeting will be held on the 14th October 2007 at the Sandton Field and Study Centre at 11.30 AM for Noon.

This is a Bring your own Food and Beverage Affair so please don't forget as food and beverages **WILL NOT BE** provided by the club.

There will be tables and chairs at the venue.

As usual there will be a raffle with lots of goodies and an auction so bring copious amounts of cash with you.

The shareholders have put up a prize of one year's free subscription to the farm. To qualify for the draw the member must be at the AGM and fills in details on an entry form. Only one entry form per member family will be allowed. The winner will be drawn by lucky draw at the AGM.



TFFC RULES

1. **Only conventional fly fishing tackle may be used and specifically barbless hook flies.**

Members should be in possession of a current Trout Licence - failure to do so could expose the Member to prosecution by the Provincial Nature Conservation Authorities.

TFFC supports Fosaf and encourages all members to join the Association. All new members applying to TFFC will be required to join Fosaf.

2. The Accommodation Register **must be completed on arrival** by all persons visiting the farm.
3. **The Fishing Record must be completed each day, by each person fishing, recording details of each fish killed and numbers of fish returned.**

4. The maximum daily bag limit is **6** fish per rod, or **10** per party, with a maximum of **2** fish per rod per dam. Fishing **must cease** on a dam once the bag limit of 2 is reached and for the day when the daily bag limit is reached

Special temporary limits may be applied to one or more of the dams from time to time and will be communicated via the Notice Board and/or by the Newsletter.

5. All fish must be cleaned at the dam and the entrails returned to the water.
6. **No** dogs or shooting (without DTF Directors' permission) permitted on the property. **No** wild flowers may be picked. **No** driving to the dams except on work parties, or with Directors' permission, or to transport boats and equipment to Dam 3 only.
7. **Under no circumstances will the wearing of gumboots/waders be tolerated in the house. Litter will not be tolerated and all bottles, cans, plastic or non bio-degradable refuse must be taken home with you and not left at the farm or in the veld. Litter includes cigarette ends.**

UNDER NO CIRCUMSTANCES MAY TVS, RADIOS OR ELECTRIC HEATERS BE USED AT MIDDELPUNT.

8. Boat fishing, at own risk, on Dam 3 only.
Float tubes or kick boats may be used on any Dam but bank anglers have right of way.
9. Accommodation must be reserved through the Booking Officer:

Sheila Brittain
(011) 477-5242 (Tel/Fax)
Office Hours Please – Monday to Friday

Day Visitors must also notify the Booking Officer of intended visits.

10. Members are allowed one guest or guest party per month. A fee of R75.00 per day (or part of a day) will be charged for each guest rod and a fee of R200 will be charged for the guest room on a week-end from Friday or Saturday to Sunday. During the week a fee of R100 per night will be charged for the guest room from Sunday night to Thursday night. A maximum of one guest room may be booked. No guests allowed on long weekends unless sharing or unless there is accommodation spare. Spare accommodation is defined as a spare room/s on the Monday of the week in which a long weekend falls. **IF A PUBLIC HOLIDAY FALLS ON A THURSDAY OR FRIDAY OR A MONDAY OR TUESDAY, THIS WILL BE DEEMED A LONG WEEKEND.**

Guest fees must be paid directly into the Bank Account No. 6204 4690106 of Dullstroom Trout Farm Ltd at FNB The Glen, Branch No. 25-96-05. The deposit slip must then be faxed to Sheila Brittain at Fax No. (011) 477-5242 **before the visit takes place.**

11. The domestic servants must be paid R4,00 per person per day or part of a day with a minimum of R4,00 per person per visit. This money to be collected by the Weekend Warden, entered into the receipt book and given to the servant who must sign for it.
12. When at the farm, please enter any problems, suggestions or maintenance issues into the Maintenance Book situation in the shareholders block - and wear your Membership Card.